

SPORTS FLOORING AND ELASTIC LAYERS FOR MULTI-PURPOSE, GROUP AND INDIVIDUAL SPORTS AREAS



SPORTEC® products for multi-purpose, group and individual sports areas

SPORTEC® floor coverings, made from top-quality recycled rubber tyre and EPDM colour granules, are extremely sturdy, easy to clean and water-resistant. Soft walking comfort, outstanding impact sound properties, force reduction, robustness and easy installation and maintenance, are all characteristics that make the **SPORTEC®** product range the ideal solution for use for group and individual sports of all kinds.

Available in a variety of attractive colours, **SPORTEC®** allows for personalized floor design. **SPORTEC®** rubber floor coverings bring comfort and colour that perfectly match to your interior.

Many **SPORTEC®** floor coverings are available with Cfl-s1 fire certification (tested according to EN 13501-1). **SPORTEC®** products also benefit from a VOC omissions rating of A+ in accordance with AFSSET regulations and comply with VOC requirements of DIBt and AgBB. Additionally they have high anti-slip properties R10 / R9 (according to DIN 51130 and the DS label).



Multipurpose areas



Basketball



Tennis



Football



Hockey



Athletics



Leisure activities



Dog training



Swimming pools



Golf



Winter sports



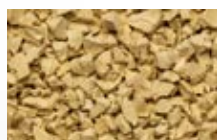
Shooting areas

EPDM colour range

white



eggshell



beige



yellow



bright yellow



dark green



green



bright green



dark blue



blue



bright blue



pink



lilac



bright orange



red



bright red



brown



beige-brown



dark grey



medium grey



light grey



black





SPORTEC® UNI versa sandwich



SPORTEC® black sprint



SPORTEC® UNI classic

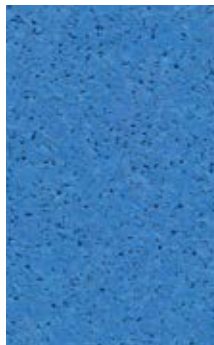
IDEAL SPORTS FLOOR COVERING FOR INDOOR AREAS

SPORTEC® UNI classic has been specifically developed for indoor sports areas. It consists of 100 % compressed EPDM rubber and uniform colouring, which allows for the application of high-contrast sports field lines. Thanks to its excellent walking comfort and very good impact and room noise, the flooring is also highly suitable for sports halls and multi-purpose sports areas.

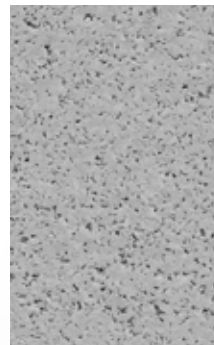
Technical Data

Material	fine-grain EPDM colour granules, PU-elastomer bonded
Colours	red, blue, bright grey, dark grey, beige
Roll width	1,250 mm (± 1.5%)
Thickness	4 mm (± 0.3 mm) (other thicknesses available on request)
Roll length	length (± 1.5%): 30 m
Fire resistance	Cfl-s1 (B1) (EN 13501-1)
Tensile strength	min. 0.7 N/mm ² (EN ISO 1798)
Elongation at break	min. 70 % (EN ISO 1798)

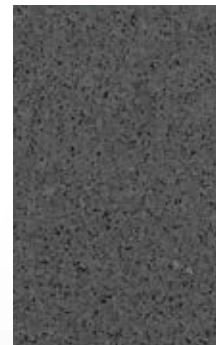
blue



light grey



dark grey



beige



red



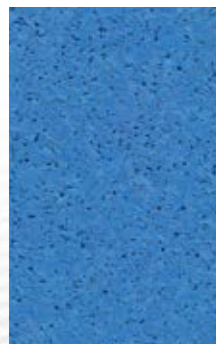
SPORTEC® UNI classic sandwich

PREVENTING JOINT DAMAGE AND INJURIES IN INDOOR AREAS

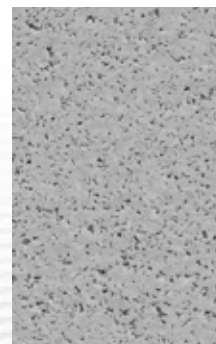
SPORTEC® UNI classic sandwich consists of a technically advanced elastic layer made from **SPORTEC® standard** material and a tried and tested **SPORTEC® UNI classic** floor covering. This combination prevents damage to joints and other injuries and is therefore particularly recommended for indoor sports facilities in schools, leisure centres and multi-purpose buildings. Both the elastic layer and the floor covering are supplied in rolls. The two layers are however installed separately. First, the elastic layer is glued to the substructure. After the adhesive has fully cured, the floor covering is glued to the elastic layer.

Technical Data	
Material	top layer: Fine-grain EPDM colour granules, PU-elastomer bonded elastic layer: Fine-grain recycled rubber tyre granules PU-elastomer bonded
Colours	top layer: bright grey, dark grey, red, blue, beige (other colours available on request) elastic layer: black
Roll width	top layer: 1,250 mm (± 1.5 %) elastic layer: 1,500 mm (± 1.5 %)
Thickness	top layer: 4 mm (± 0.3 mm) elastic layer: SPORTEC® standard standard thicknesses (other thicknesses available on request)
Roll length	top layer: 30 m (± 1.5 %) elastic layer: Standard lengths (other lengths available on request)
Elongation at break	min. 70% (EN 12230)
Ball rebound properties*	100% (EN 14877)

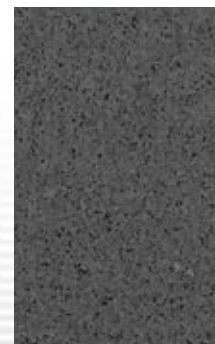
blue



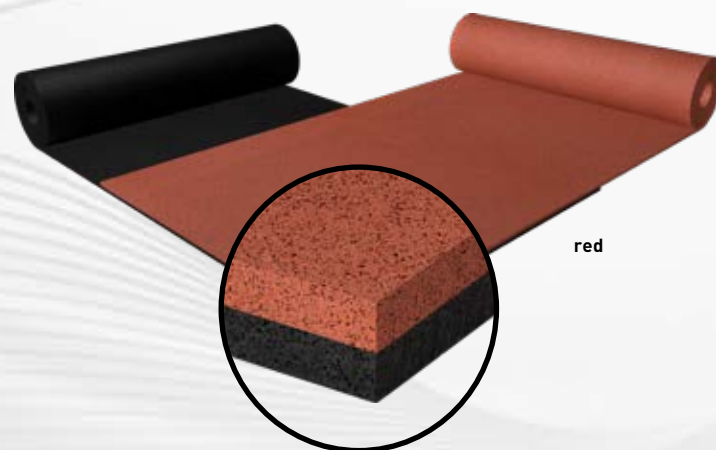
light grey



dark grey



beige



* according to EN 14877 for UNI classic sandwich of thickness 4+4 mm





SPORTEC® fusion classic

PRE-FABRICATED COMBINATION OF ELASTIC LAYER AND FLOOR COVERING

SPORTEC® fusion classic is a pre-fabricated combination of a technically advanced elastic layer made from SPORTEC® standard material and a tried and tested SPORTEC® UNI classic floor covering. This system prevents damage to joints and other injuries and is therefore particularly recommended for indoor sports facilities in schools, leisure centres and multi-purpose buildings. The elastic layer and the top layer are delivered as pre-fabricated double-layer rolls which means less time is required for installation.

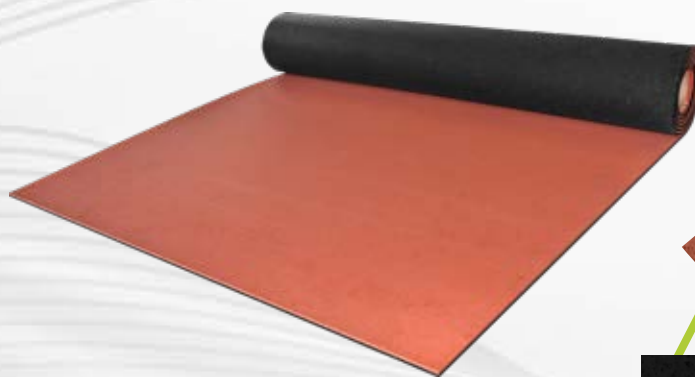
Technical Data

Material	top layer: Fine-grain EPDM colour granules, PU-elastomer bonded elastic layer: Fine-grain recycled rubber tyre granules PU-elastomer bonded
Colours	red, blue
Roll width	1,250 mm (± 1.5%)
Thickness	8 mm (± 0.6 mm)
Roll length	15 m
Note	The elastic layer and the top layer are delivered as pre-fabricated double-layer rolls.
Fire resistance	Cfl-s1 (top layer)
Tensile strength	min. 0.7 N/mm ² (EN 12230)
Anti-slip property	R9 (DIN 51130)
Abrasion	max. 450 mm ³ (DIN 53516)

red



blue



pre-fabricated double-layer rolls



SPORTEC® UNI versa

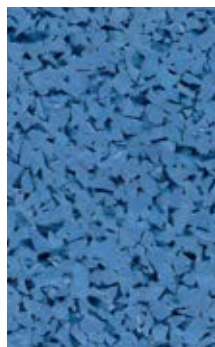
VERSATILE SURFACE FOR INDOOR AND OUTDOOR SPORTS AREAS

SPORTEC® UNI versa is a durable, water resistant flooring suitable for various types of applications in indoor and outdoor areas like athletics, multi-purpose areas, volleyball, handball, basketball, badminton or tennis. Due to its high resilience and excellent durability against mechanical impact it is a perfect allround talent. **SPORTEC® UNI versa** for sports applications can be used with or without elastic underlay. In case of high shock absorbance required **SPORTEC® standard** can be used as elastic underlay. The combination of **SPORTEC® UNI versa** and **SPORTEC® standard** is offered as **SPORTEC® UNI versa sandwich**.

Technical data:

Material	Coarse-grained coloured EPDM granules bonded with polyurethane elastomer.
Colours	bright grey, dark grey, red, blue, green, beige (other colours on request)
Surface	coarse granule structure
Roll width	1,250 mm (± 1.5%)
Thickness	4 mm (± 0.3 mm) (other thicknesses on request)
Volumetric weight	approx. 1,095 kg/m ³
Roll length	30 m (± 1.5%)
Tensile strength	min. 0.3 N/mm ² (EN ISO 1798)
Elongation at break	min. 40% (EN ISO 1798)
Hardness	60 ± 5 Shore A (DIN 53505)
Compression set	approx. 15% (DIN 53517)
Fire resistance	C _{fl} s1 (DIN EN 13501-1)

blue



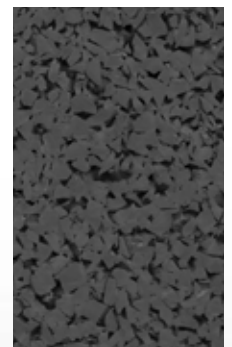
green



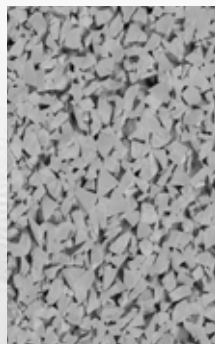
beige



dark grey



light grey *



red



* only for indoor areas





SPORTEC® UNI versa sandwich

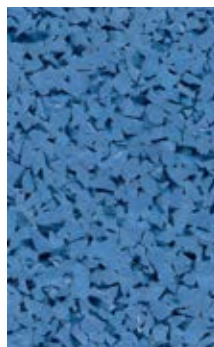
PREVENTING JOINT DAMAGES AND INJURIES IN INDOOR AND OUTDOOR AREAS

SPORTEC® UNI versa sandwich is a combination of our well-engineered elastic layer **SPORTEC® standard** and our **SPORTEC® UNI versa** floor covering. This combination offers a maximum protection and safety while preventing joint damages and injuries. It proves its perfect suitability as outdoor sports surfacing for school sports, leisure activities and multi-purpose areas. Both the elastic layer and the floor covering are supplied in rolls. The two layers are however installed separately. First, the elastic layer is glued to the substructure. After the adhesive has fully cured, the floor covering is glued to the elastic layer.

Technical data:

Material	Surface: coarse-grained EPDM granules bonded with polyurethane elastomer Underlay: fine rubber granules bonded with polyurethane elastomer
Colours	surface green, blue, red, dark grey, bright grey and beige (other colours on request) Underlay: black
Width	Surface: 1,250 mm (± 1.5%) Underlay: 1,500 mm (± 1.5%)
Thickness	Surface: 4 mm (± 0.3 mm) Underlay: standard thickness of SPORTEC® standard (other thicknesses on request)
Roll length	Surface: 30 m (± 1.5%) Underlay: standard length (other length on request)
Tensile Strength	0.7 N/mm ² (EN 12230)
Elongation at break*	59% (EN 12230)
Ball rebound*	100% (EN 14877)

blue



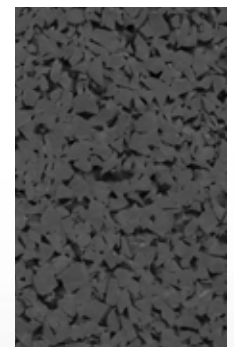
green



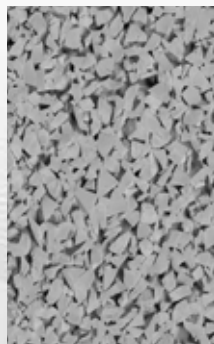
beige



dark grey



light grey **



red

* according to EN 14877 for UNI versa sandwich of thickness 4+4 mm

** only for indoor areas



SPORTEC® UNI versa sandwich



SPORTEC® UNI versa sandwich



SPORTEC® UNI versa sandwich



SPORTEC® UNI versa



SPORTEC® UNI versa



SPORTEC® UNI versa sandwich



SPORTEC® standard / trend / premium / soft

THE IDEAL UNDERLAY — AVAILABLE IN VARIOUS SHOCK ABSORPTION CLASSES AND PRICE CATEGORIES

SPORTEC® standard is a widely used elastic layer for sports and multi-purpose facilities where volleyball, hand ball, basket ball, badminton and tennis are played. Sports floors with an integrated **SPORTEC® standard** layer are hard-wearing, improve safety and help prevent damage to joints. **SPORTEC® trend** has been developed on the basis of our all-rounder **SPORTEC® standard**. The elastic layer consists of a well-balanced combination of closed-cell rubber made from recycled material and fine-grain recycled rubber tyre granules and offers improved shock absorption compared with the standard product. This enhanced elastic layer therefore offers unrivalled flexibility and excellent ball rebound properties, and is easy to install. The **SPORTEC® premium** elastic layer is made from recycled closed-cell rubber and recycled rubber tyre granules. It has been designed for exceptionally high shock absorption without exceeding the maximum permissible deformation limits (according to EN 14904). **SPORTEC® premium** therefore offers optimum protection for joints and minimises the risk of injury, which makes it the ideal solution for school sports facilities, leisure centres and multi-purpose sports complexes. **SPORTEC® soft** is a special mix of fine-grain recycled cellular rubber granules and rubber fibres and has been specially developed as a high performance elastic layer for spike resistant systems. **SPORTEC® soft** also offers unrivalled shock absorption properties helping to achieve Grade 2 performance levels according to norm EN 14904.

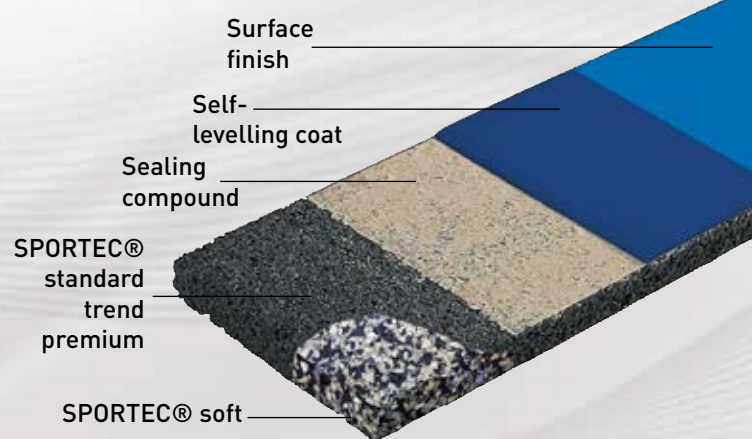
Technical Data

Material	fine-grain recycled rubber tyre granules, PU-elastomer bonded (trend and premium with additional closed-cell recycled rubber, soft : Mix of fine-grain recycled cellular rubber granules and rubber fibres)
Volumetric weight	approx. 770 (trend approx. 600, premium , approx. 600, soft approx. 560 kg/m ³)
Colour	black (soft : multi-coloured)
Roll width	1,500 mm (± 1.5 % mm)
Roll length and thickness	length [m] (± 1.5%) / thickness [mm]: standard : 40/3, 30/4, 24/5, 20/6, 17/7, 15/8, 13/9, 12/10, 10/12; trend : 30/4, 24/5, 20/6, 17/7, 15/8, 13/9, 12/10, 10/12; premium : 30/4, 24/5, 20/6, 17/7, 15/8, 13/9, 12/10, 10/12, 9/14; soft : 20/6, 15/8, 13/9, 12/10, 10/12
Elongation at break	min. 50% (min. 40% premium) (EN ISO 1798)

Characteristic:	Volumetric weight	Tensile strength	Force reduction*
SPORTEC® standard	ca. 770 kg/m ³	0,60 N/mm ²	> 25 % mit 10 mm
SPORTEC® trend	ca. 600 kg/m ³	0,30 N/mm ²	> 25 % mit 8 mm
SPORTEC® premium	ca. 600 kg/m ³	0,30 N/mm ²	> 25 % mit 6 mm
SPORTEC® soft	ca. 560 kg/m ³	0,30 N/mm ²	39 % at 10 mm

Properties

- Made from recycled rubber
- Excellent noise absorption properties
- Water-repellent
- Good to very good ball rebound properties
- Uniform elasticity across the floor
- Suitable for underfloor heating



* [EN 14904, type P1]

⁽¹⁾ **trend**: 4, 5, 6, 7, 8, 9, 10, 12 mm ; **soft**: 9, 10, 12, 14 mm; 3 mm **standard** only

⁽²⁾ 9/14 **premium** only ; 40/3 **standard** only



SPORTEC® premium



SPORTEC® standard



SPORTEC® black sprint

HIGH-PERFORMANCE IN ALL FORMS STARTS HERE ON FIRM GROUND

Directly in the moments beforehand all expectations are directed towards it: **SPORTEC® black sprint**. This elastic sub-base offers toughness and reliability for run-up or warm-up tracks in track and field athletics, in street ball and other multipurpose outdoor areas. **SPORTEC® black sprint** proves itself through cost-effective and rapid installation – fixed on firmly compacted sub-structure. The surface coatings offered, made of Polyurethane with EPDM granules, make **SPORTEC® black sprint** resistant to loads such as spikes, UV light and extreme weather conditions.

A special reinforcing layer guarantees stability of shape and stabilises movements of both track and field athletes and sports enthusiasts over a long period of time. **SPORTEC® black sprint** is resistant to decay, does not harden and does not embrittle.

Technical data

Material	a mixture of black recycling rubber granules bonded with polyurethane elastomer
Colour	black
Surface	granule structure
Width	1,250 mm (± 1.5%)
Thickness	10 mm (± 0.3 mm) (other thicknesses on request)
Volumetric weight	approx. 650 kg/m ³
Roll length	at 10 mm thickness: 35 m (± 1.5%)
Tensile strength	approx. 0.2 N/mm ² (EN ISO 1798)
Elongation at break	approx. 40% (EN ISO 1798)
Water permeability	4500 cm/h (EN 12616)



PU layer with EPDM granules

Pore sealing

SPORTEC® black sprint





SPORTEC® sprint

HIGH-PERFORMANCE INDOOR FLOORING PRODUCT FOR TOP ATHLETES

The **SPORTEC® sprint** elastic layer offers extra strength and reliability for indoor athletics facilities, especially in the start and warm-up areas. **SPORTEC® sprint** is a cost-effective solution designed for fast installation.

The floor surface made in polyurethane with interspersed EPDM granules makes the Sportec sprint product extremely durable, resistant to wear and spike-proof. A special reinforcing layer guarantees dimensional stability and durability, effectively stabilising the movements of track and field athletes and other sports enthusiasts over a long period of time. **SPORTEC® sprint** is rot-proof and does not harden or become brittle over time.

Technical Data

Material	high-grade recycled rubber granules, PU-elastomer bonded
Thickness	8, 9, 10 mm (± 0.3 mm)
Roll width	1,500 mm (± 1.5 % mm)
Length	length [m] (± 1.5 %) / thickness [mm]: 40/8, 35/9, 32/10
Colour	multi-coloured
Tensile strength	approx. 0.8 N/mm ² (EN ISO 1798)
Elongation at break	approx. 125% (EN ISO 1798)
Spike resistance	Class I (DIN 18035, part 6)

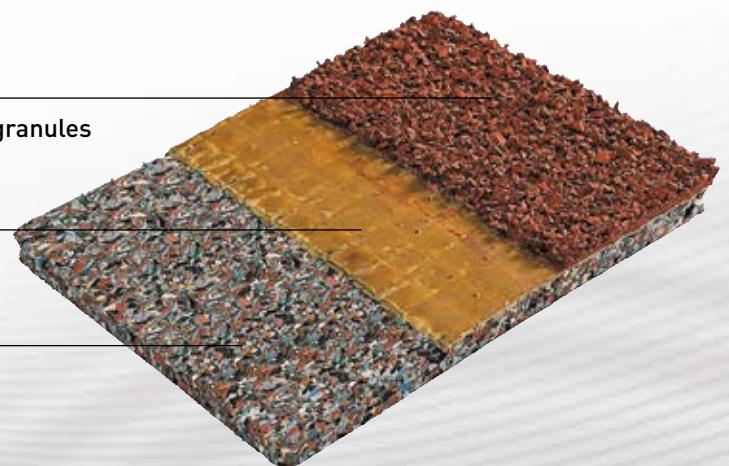
Properties

- Long service life
- Easy to install and replace
- No hardening or embrittling over time

PU layer with interspersed EPDM granules

Sealing compound

SPORTEC® sprint





SPORTEC® team arena

EXCELLENT SAFETY FOR INDOOR SPORTS AND PLAY

SPORTEC® team arena is a substructure developed specially for indoor artificial turf, installed in soccer halls and similar facilities. Apart from outstanding impact absorption and ball rebound properties, the fine granule structure of the **SPORTEC® team arena** offers great walking comfort and a play experience that is similar to that of real turf. **SPORTEC® team arena** is supplied in rolls for easy and fast installation.

Technical Data

Material	Special mixture made from selected recycled rubber granules, PU-elastomer bonded
Volumetric weight	approx. 800 kg/m ³
Thickness	8, 9, 10, 12 mm (± 0.3 mm)
Roll width	1,500 mm (± 1.5 % mm)
Length	length [m] (± 1.5 %) / thickness [mm]: 40/8, 35/9, 31/10, 26/12
Colour	multi-coloured
Tensile strength	approx. 0.3 N/mm ² (EN ISO 1798)
Elongation at break	approx. 50% (EN ISO 1798)

Properties

- Long service life
- Easy to install and replace
- Installation as loose layer

artificial turf

SPORTEC® team arena





SPORTEC® team cup

RUBBER SHOCKPAD FOR FOOTBALL ON ARTIFICIAL TURF

SPORTEC® team cup is reliable as a substructure for football turfs. As ready-made rolls, it is the alternative to conventional elastic and granule substructures with filled artificial turf. **SPORTEC® team cup** is enduring, load-carrying and uncomplicated: it is loose laid under artificial turf systems so that the turf layer can be exchanged without any problems. Its specially developed formulation ensures fulfilment of DIN requirements for stress relaxation, ball rebound, drainage capacity and environmental compatibility (see DIN V 18035-7). A special compound of high performance rubber granules makes **SPORTEC® team cup** an innovative substructure for artificial turf fields. The special composition means good ball rebound, outstanding force reduction and good drainage.

Technical Data

Material	A mixture of black recycling rubber granules bonded with polyurethane elastomer
Colour	black
Surface	granule structure
Width	1,250 mm (± 1.5%)
Thicknesses	8, 9, 10, 14 and 15 mm (± 0.3 mm)
Volumetric weight	approx. 650 kg/m ³
Roll length [m/at mm thickness]	45/8, 40/9, 36/10, 30/12, 25/14, 24/15 (± 1.5%)
Tensile strength	approx. 0.2 N/mm ² (EN ISO 1798)
Elongation at break	min. 35% (EN ISO 1798)
Water permeability	4500 cm/h (EN 12616)
Force reduction*	62% (DIN V 18035-7:2002-06)
Ball rebound*	59% (DIN V 18035-7:2002-06)
Ball roll behaviour*	10.9 m (DIN V 18035-7:2002-06)

Properties

- long service life
- simple to install and exchange
- loose laid
- permeable to water



* artificial grass system with sand and EPDM granulate infill



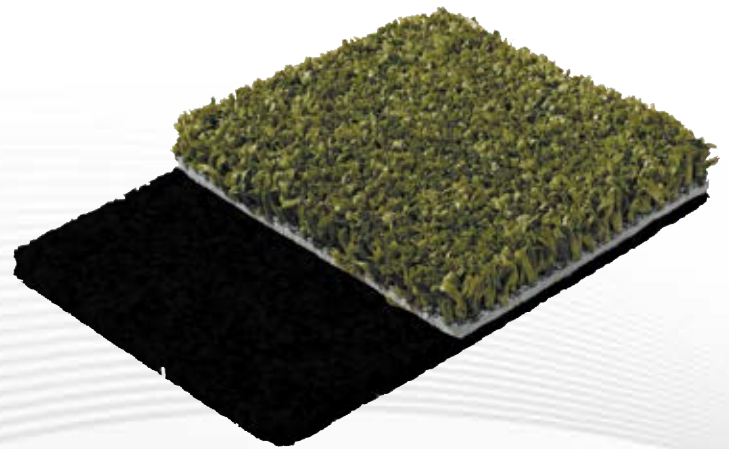
SPORTEC® team soft

THE ARTIFICIAL TURF UNDERLAY FOR OUTDOOR HOCKEY PITCHES

Manufactured from recycled tyre fibres, **SPORTEC® team soft** is an outstanding underlay for artificial hockey pitches, ensuring superb playability and excellent protection for players of all skill levels. Simple installation, long service life are further benefits provided by **SPORTEC® team soft**. The elastic underlay is simply loose laid over the solid subsurface base and glued to the neighbouring underlay sections.

Technical data

Material	Recycled tyre fibres bonded with polyurethane elastomer
Colour	black
Surface	fine fibre-textured
Width	1,500 mm (± 1.5%)
Thicknesses	8, 10 and 12 mm (± 0.3 mm)
Volumetric weight	approx. 650 kg/m ³
Roll length [m/at mm thickness]	40/8, 31/10, 26/12 (± 1.5%)
Tensile strength	approx. 0.6 N/mm ² (EN ISO 1798)
Elongation at break	approx. 60% (EN ISO 1798)



Properties

- long service life
- simple to install and exchange
- loose laid





SPORTEC® mountain

IDEAL SOLUTION FOR SKI RESORTS, SKI LIFTS AND SKI-RENTAL SHOPS

SPORTEC® mountain is the perfect solution for ski resorts, ski lifts and shops for ski rental. Thanks to its high elasticity, **SPORTEC® mountain** is ideal for walking on with ski boots and offers a high walking comfort. These robust tiles can also resist service carts being rolled across them and with its high slip resistance and attractive colours **SPORTEC® mountain** is also ideal for ski lifts. Due to its high-quality EPDM top layer **SPORTEC® mountain** meets the requirements of fire classification Cfl-s1.

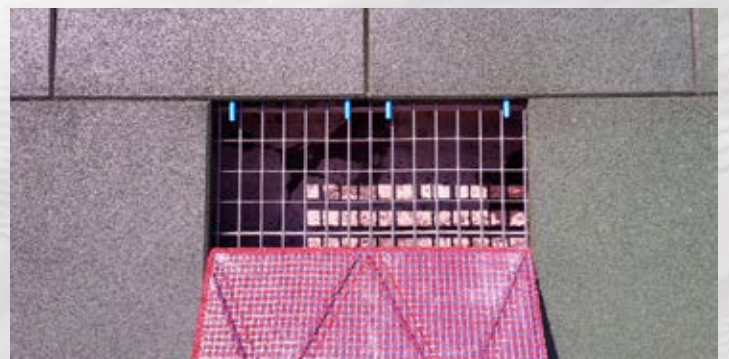
Technical data

Material	Polyurethane-bonded recycling tyre rubber granules and a reinforcing mesh at the bottom, and a surface made of EPDM granules bonded with polyurethane.
Surface	closed structure of granules
Underside	smooth with drainage and a reinforcing mesh
Colours	blue, red, green, grey, dark grey and beige
Length / width	500 x 500 (± 0.8%)
Thickness	30 mm (± 2 mm)
Fire resistance	Cfl-s1
Temperature range	-30°C to 80°C
Cold fracture resistance	24h / -40°C, no fracture
Cold crack resistance	5h / -30°C, no cracks



Properties

- high anti-slip properties also in wet areas
- walking comfort
- protection of skiing shoes
- simplified installation – especially on metal grates
- protection of subfloor
- resistant surface





SPORTEC® mountain



SPORTEC® mountain





SPORTEC® color

RUGGED, EASY-TO-CLEAN ALLROUND FLOORING FOR WINTER SPORTS ACTIVITIES

SPORTEC® color is a rugged, easy-to-clean and water-resistant floor covering material for use in ski shops, ice rinks and other winter sports applications.

Thanks to its excellent durability and high resistance to mechanical wear and anti-slip properties, **SPORTEC® color** is the all-rounder solution for rubber flooring. Choose from our range of colours and hues to create a room that matches your colour scheme, offers great walking comfort and absorbs impact and room noise.

Technical Data

Material	fine-grain recycled rubber tyre granules (black) with 5, 10, 15, 20, 30 or 50 % EPDM colour granules, PU-elastomer bonded
Colours	color 5, 10: black with blue, red, green, grey, bright yellow or blue/grey*; color 20, 30: black with blue, red, green, grey or blue/grey*; color 15: black with blue, red, green, grey, blue/grey, bright yellow or bright orange* color 50: black with blue, red, grey* [*other colours available on request]
Roll width	1,500 mm (± 1.5%)
Thickness	color 0, 5, 10, 20, 30, 50: 6* mm (± 0.3 mm) color 15: 4, 5, 6, 8, 10, 12 mm (± 0.3 mm) [*other thicknesses available on request]
Roll length	length [m] (± 1.5 %) / thickness [mm]: 30/4, 24/5, 20/6, 15/8, 12/10, 10/12

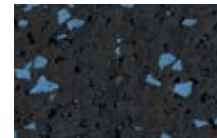


SPORTEC® color - colours

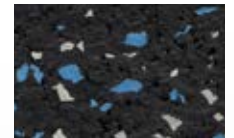
black



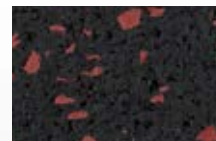
black-blue



black-blue-grey



black-red



black-bright orange



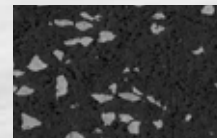
black-bright yellow



black-green



black-grey





SPORTEC® ice

PROTECTION TILE FOR ICE STADIUMS

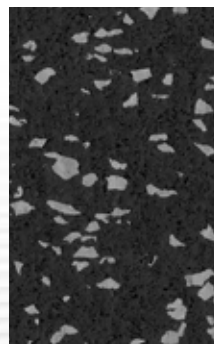
SPORTEC® ice is a protection tile which has been specially developed to meet the needs of ice stadiums, which protects the subbase against damage by mechanical action, as well as the blades of the ice skates. The surface made of our floor coverings SPORTEC® color or SPORTEC® purcolor ensures a particular high slip resistance. The simple installation, tiles are laid loose on the ground and plugged together with connector pins, as well as excellent sound-absorbing properties are further arguments for the use of **SPORTEC® ice**.

Technical Data	
Material	Polyurethane-bonded recycling tyre rubber granules with a surface layer made of SPORTEC® floor coverings with paving stone optics.
Surface	Paving stone optics, Surface made of SPORTEC® floor covering (SPORTEC® color or SPORTEC® purcolor)
Lower side	base with a reinforcing mesh
Thickness	30 mm (± 2 mm)
Length / width	500 mm / 500 mm (± 0.8 %)
Fire resistance	Efl (B2) (EN 13501-1) (color) Cfl-s1 (B1) (EN 13501-1) (purcolor)
Anti-slip property	depending on tile surface R 10 (DIN 51130) (color) R 9 (DIN 51130) (purcolor)

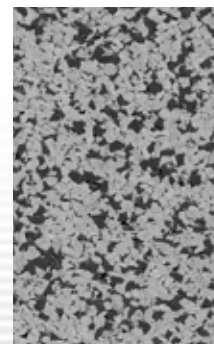
color 0



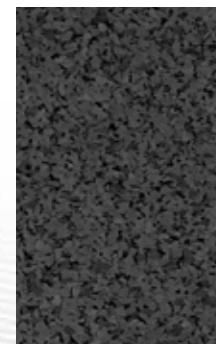
color 15 grey



purcolor light grey



purcolor dark grey





SPORTEC® golf - Outdoors

WALKING COMFORT AND MODERN DESIGN FOR GOLF COURSES

SPORTEC® products are suitable for numerous areas on the golf course. **SPORTEC® golf ball reservoirs** offer a high-grip holding area for golf balls on driving ranges. **SPORTEC® golf pavers** and **golf slabs** are ideal for walkways, terraces and driving ranges providing high walking comfort whilst simultaneously protecting golf shoes and equipment thanks to their elasticity. With a high variety of colours, **SPORTEC® UNI versa sandwich** is well suited for walkways and driving ranges, accentuating colourful designs in golf course landscaping.

SPORTEC® golf pavers



SPORTEC® golf slab *



* also available in EPDM colours



SPORTEC® UNI versa



SPORTEC® golf ball reservoir







SPORTEC® golf - Indoors

VARIOUS DESIGN OPTIONS IN INDOOR AREAS

SPORTEC® variant and **SPORTEC® purcolor** are the ideal floor covering for club houses, restaurants or dressing rooms in golf courses. These robust rubber floorings are ideal for use under golf shoes with spikes and thanks to variable colours and hues, **SPORTEC® variant** and **SPORTEC® purcolor** fit perfectly in any room design.

Technical Data variant

Material	free choice of colour combination from the EPDM colour range, with or without black recycled rubber tyre granule share, PU-elastomer bonded
Colours	as chosen by customer ^{[1] [2]}
Roll width	1,250 mm (± 1.5%)
Thickness	4 or 6 mm (± 0.3 mm) (other thicknesses available on request)
Roll length	length [m] (± 1.5 %) / thickness [mm]: 30/4, 20/6

SPORTEC® variant

greyscale



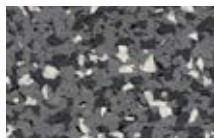
blue freckles



choco mix



dark matter



silver star



Technical Data purcolor

Material	15 % black EPDM granules and 85 % EPDM colour granules, PU-elastomer bonded
Colours	red, bright grey, medium grey, dark grey or blue with black (other colours available on request)
Roll width	1,250 mm (± 1.5%)
Thickness	4, 6, 8 mm (± 0.3 mm) (other thicknesses available on request)
Roll length	length [m] (± 1.5 %) / thick- ness [mm]: 30/4, 20/6, 15/8

SPORTEC® purcolor

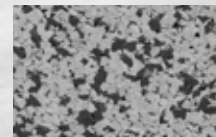
red-black



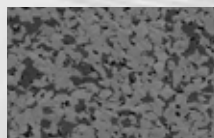
blue-black



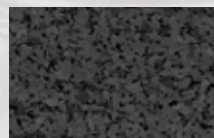
light grey-black



medium grey-black



dark grey-black





SPORTEC® ADHESIVE / RZ SEALING / RZ CLEANER

PERFECT PROTECTION, CLEANING AND HOLD FOR ALL SPORTEC® MATERIALS

RZ TURBO PROTECT ZERO is a solvent-free 2-component sealing finish for extreme longterm protection of elastic artificial flooring. Provides a very elastic and sturdy protection layer, having very high resistance to heavy mechanical wear and chemical attack.

SPORTEC® UN 700 is the two component polyurethane adhesive for gluing SPORTEC® materials on paved substrates. It is suitable for all floor coverings and elastic layers of the brand SPORTEC® and can be applied to nearly all paved substrates.

Technical Data	
Shelf life	9 months
Packsizes	5 l + 500 ml hardener
Working temperature	15 - 25 °C
Pot life (20°C)	120 min. (20 °C / 60 % relat. LF)
Set to foot traffic (20°C)	after approx. overnight drying
Final strength (20°C)	after approx. 7 days

Technical Data	
Packaging	Set of 10 kg: mixing ratio of Resin Base : Curing Agent = 850 : 150 Set of 25 kg: mixing ratio of Resin Base : Curing Agent = 850 : 150 Set of 28 kg: mixing ratio of Resin Base : Curing Agent = 850 : 150
Pot life (20°C)	approx. 30-60 minutes
Can be walked on after (20°C)	after approx. 8 hours
fully cured after (20°C)	after approx. 36 hours



RZ TURBO PROTECT ZERO



RZ INTENSIVE CLEANER



RZ INTENSIVE CLEANER is ideal for removing persistent dirt, cleaning product traces and glue residues on SPORTEC® rubber flooring products.



SEALING



Technical Data	
Packsizes	10 l
Working temperature	18 - 25 °C
Area	10 l: 250 m²



SPORTEC® shooting & shooting pro

SAFETY AND PROTECTION FOR SHOOTING RANGES

Specifically designed as a projectile-absorbing surfacing material, **SPORTEC® shooting** provides protection over floors, walls and ceilings of indoor shooting ranges and nearby outdoor facilities. **SPORTEC® shooting** reliably absorbs dangerous ricochets and rebounds as documented by independent test reports. The material's remarkable elasticity makes bullet holes practically invisible after absorption. **SPORTEC® shooting** slabs installed on floors could be covered. It provides a seamless surface which can be easily cleaned of gunpowder deposits. On walls and ceilings this coating is normally not required.

Technical data

Material	Recycling tyre rubber granules bonded with polyurethane elastomer
Thickness	40 mm (shooting), 45 mm (shooting pro) (± 2 mm)
Dimensions	500 x 500 mm / 1.000 x 500 mm (± 0.8 %)
Colours	red (black, grey and green on request)
Area weight	ca. 27 kg/m ² (shooting), ca. 39.2 kg/m ² (shooting pro)
Tensile strength	min. 0.75 N/mm ² (shooting) min. 1.81 N/mm ² (shooting pro) (EN ISO 1798)
Elongation at break	min. 50% (shooting), min. 101% (shooting pro) (EN ISO 1798)
Temperature range	- 30°C to + 80 °C
Fire resistance	E _{fl} (B2) (DIN EN 13501-1); B _{f1} -s1 (B1) (DIN EN 13501-1)



When using **SPORTEC® shooting** as floor covering, we recommend a polyurethane coated sealing after installation. In this case, **SPORTEC® shooting** can meet the requirements of fire resistance class Bfl-s1 (according to EN 13501-1).

Properties

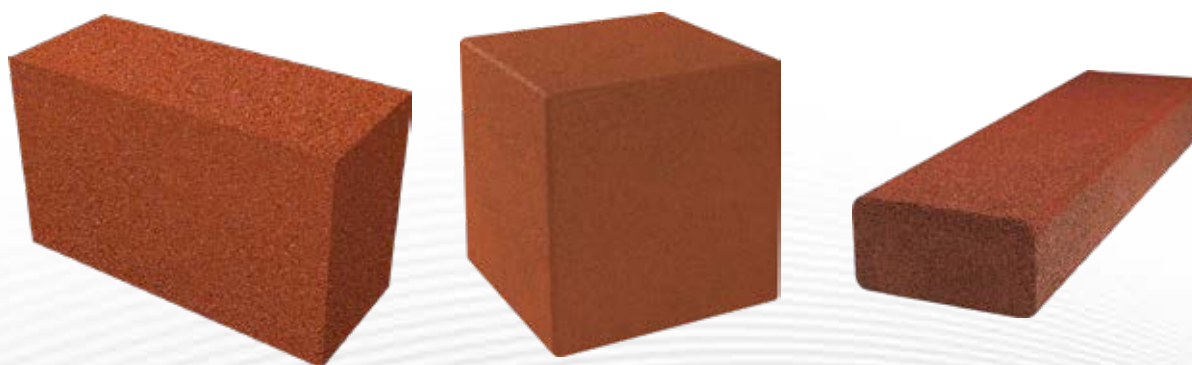
- prevention of bullet rebound from walls, ceiling and floor
- absorption of projectile ricochets
- rubber slabs with integrated connector pins
- certified by Beschussamt München (Shooting: B-31/2009, Shooting pro: 15M066A01)
- resistant, durable and abrasion resistant surface
- easy installation also on walls



SPORTEC® shooting blocks

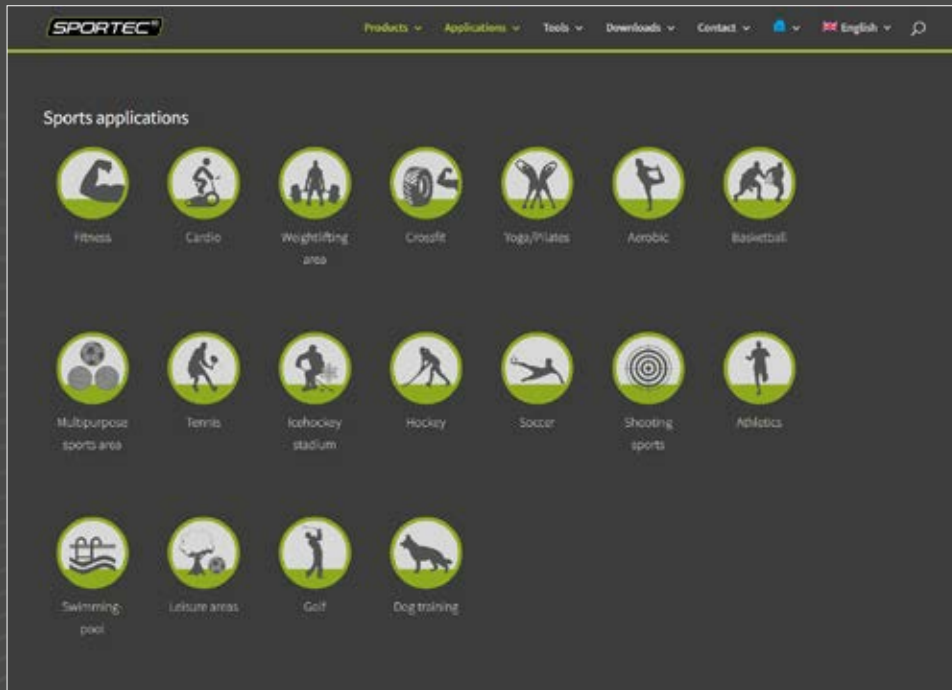
PROJECTILE ABSORBING MATERIALS

Specifically designed as a projectile-absorbing surfacing material, **SPORTEC® shooting blocks** provides protection at targets of indoor shooting ranges and nearby outdoor facilities. **SPORTEC® shooting blocks** reliably absorbs dangerous ricochets and rebounds.



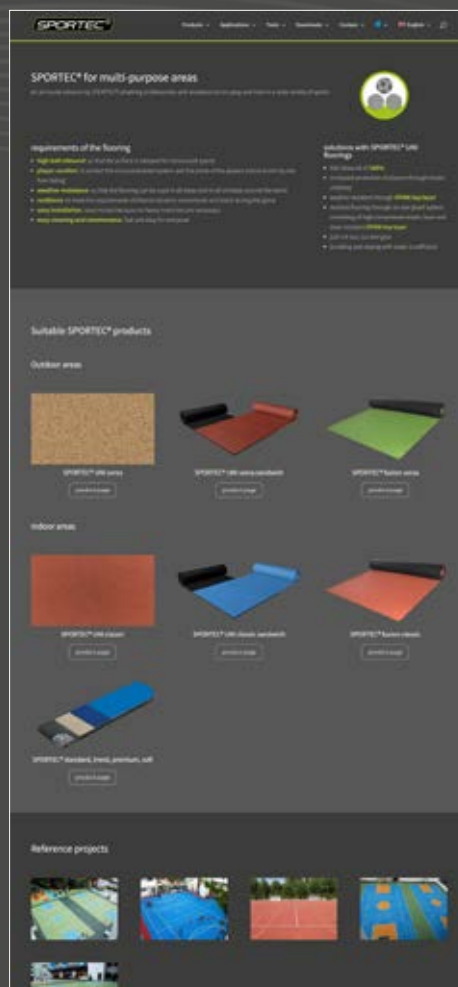
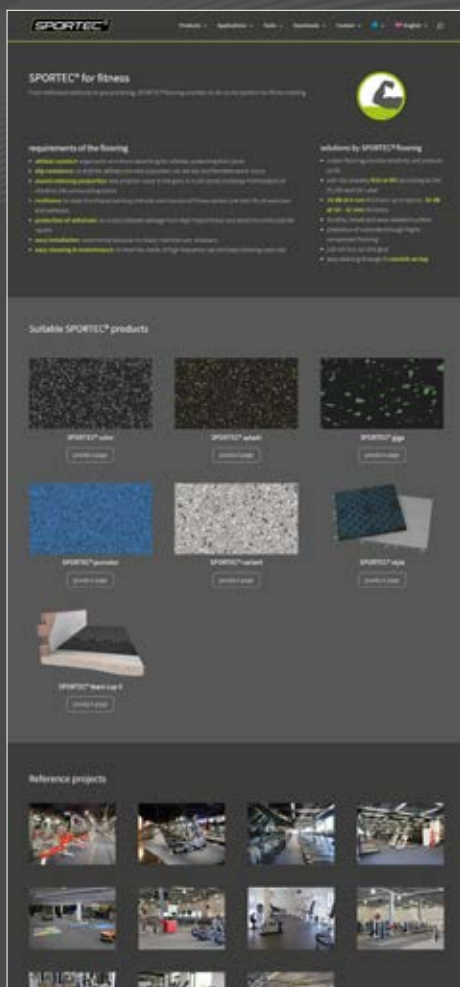
Technical data

	SPORTEC® shooting block	SPORTEC® shooting cube	SPORTEC® shooting step block
Material	Recycling tyre rubber granules bonded with polyurethane elastomer		
Colour	red (black and green available on request)		
Fire resistance	E _{fl} (B2) (DIN EN 13501-1)		
Temperature range	- 30°C to + 80 °C		
Dimensions (length x width x height)	500 x 300 x 200 mm (± 0.8 %) 250 x 300 x 200 mm (± 0.8 %)	400 x 400 x 400 mm (± 0.8 %)	1,000 x 300 x 150 mm (± 0.8 %) 1,000 x 240 x 120 mm (± 0.8 %)
Weight	ca. 25.5 kg (500 x 300 x 200 mm) ca. 12.75 kg (250 x 300 x 200 mm)	ca. 50.0 kg	ca. 33.0 kg (1,000 x 300 x 150 mm) ca. 29.0 kg (1,000 x 240 x 120 mm)



A complete overview of all SPORTEC® products and applications.

www.kraiburg-relastec.com/sportec/en/applications



You can access detailed product information, technical sales support and reference images in order to help you and your clients make the right choice!

SPORTEC® UNI versa sandwich – multipurpose sports surface



SPORTEC® giga – Crossfit



SPORTEC® purcolor – Commercial Flooring



SPORTEC® purcolor for fitness



SPORTEC® color 50 – Weight Lifting



SPORTEC® style – ideal protection for heavy weights



SPORTEC® purcolor for fitness and weight lifting



SPORTEC® purcolor functional training designs



SPORTEC® purcolor functional training designs

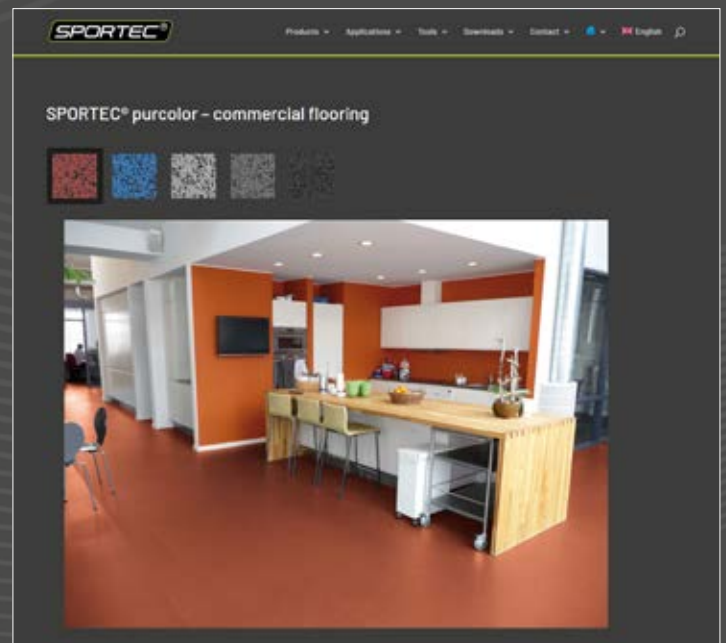
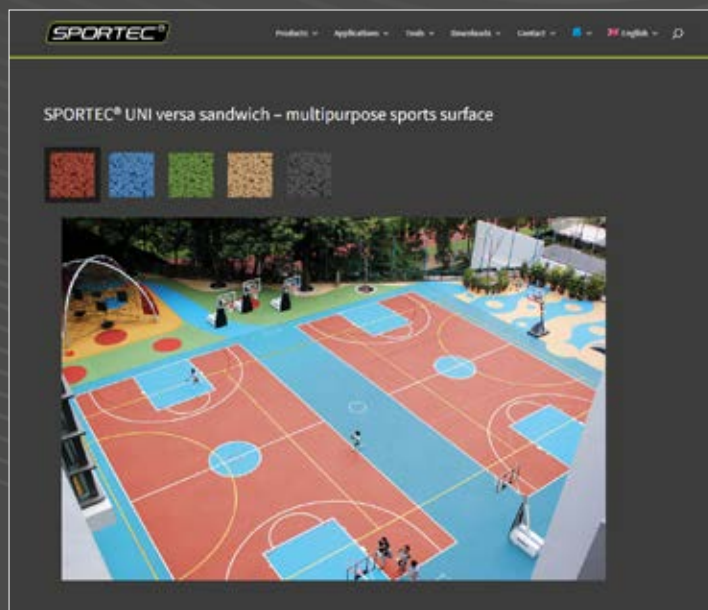


Plan how you want your room to look

Step 1: Choose the photo best suited to your application

Step 2: Click on the colour of your choice to show your preferred SPORTEC® flooring

www.kraiburg-relastec.com/sportec/en/room-designer





ENVIRONMENTAL MANAGEMENT AT KRAIBURG RELASTEC

FROM OLD TYRES TO TOP-QUALITY FINISHED PRODUCTS

KRAIBURG Relastec is one of the best known global companies that specialise in the production of technical rubber materials from old tyres. As a recycling specialist, we have for many years been committed to the protection of the environment. Every year, we process and recycle about 85,000 tons of old tyres, closed-cell rubber and rubber production scrap. From these raw materials, we produce high-quality granules based on our internally developed formulations. These granules make up more than 90 % of the material used in our finished products. All our products are 100 % recyclable without loss of quality.

At **KRAIBURG Relastec**, protecting the environment is a strategic priority. We are convinced that sustainable growth is only achievable, if we meet our responsibilities towards the environment. **KRAIBURG Relastec** has therefore adopted a very simple policy: Protecting the environment is part and parcel of what we do every day!

Our “pro environment” logo stands not only for 40 years of sustainable business practices that protect resources, but emphasises our commitment to product quality and continuous improvement for the protection of the environment beyond the statutory regulations.



-  We turn waste rubber materials into new raw materials and products, making a valuable contribution to waste reduction and the protection of the environment.
-  We invest in innovative and environmentally friendly production methods and technologies.
-  Our products are subject to continuous quality testing and further development, whereby environmental concerns are given priority. We are always on the lookout for even more environmentally friendly alternatives that enable us to further reduce emissions and protect resources.
-  All employees of KRAIBURG Relastec undertake to implement sustainable practices in their daily work and to protect the environment wherever they can.
-  We expect the same from our suppliers and constantly monitor their performance.



ADDITIONAL SPORTEC® BROCHURES
 FITNESS CENTERS, COMMERCIAL FLOORING, ETC



SPORTEC® brochure
 Sports flooring and elastic layers for fitness centres and weight-lifting areas



SPORTEC® brochure
 Commercial flooring for offices, shops, exhibitions, hotels, schools, nurseries and rehabilitation Centres



SPORTEC® reference brochure
 Reference projects with SPORTEC® sports flooring and elastic layers from all over the world



For detailed information such as data sheets, installation instructions, digital versions of our SPORTEC® brochures and further reference pictures please visit www.kraiburg-relastec.com/sportec/en



SPORTS FLOORING AND ELASTIC LAYERS
made from recycled rubber

KRAIBURG Relastec GmbH & Co.KG
Fuchsberger Straße 4 · D-29410 Salzwedel

Sales International:

Tel. +49 (0) 8683 701 -340

Fax +49 (0) 8683 701 -4340

sportec@kraiburg-relastec.com

www.kraiburg-relastec.com/sportec

No liability accepted for errors or omissions. Subject to changes without prior notice.
© KRAIBURG Relastec GmbH & Co. KG 2017

